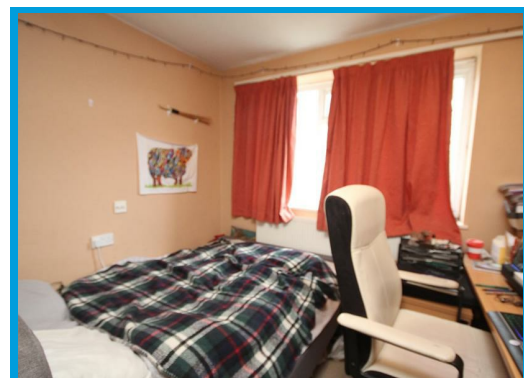
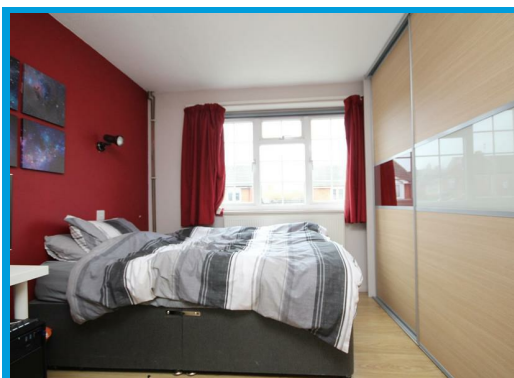




Lynwood, Guildford, Surrey GU2 7NY

£2,600 PCM

4 BEDROOM STUDENT PROPERTY AVAILABLE // 2026-2027 ACADEMIC YEAR - NEAR SURREY UNIVERSITY & GUILDFORD TOWN CENTRE.



# Description

Located within moments of Surrey University and Guildford town centre, this four bedroom house is ideal for students and sharers.

The accommodation comprises a small entrance hall with WC leading to the lounge, and kitchen with access to the garden.

Upstairs, the property features four further bedrooms and a bathroom with shower.

There is ample storage throughout, private rear garden and off street parking.



Energy Efficiency Rating		
	Current	Potential
Very energy efficient - lower running costs		
(92 plus) <b>A</b>		
(81-91) <b>B</b>		
(69-80) <b>C</b>		
(55-68) <b>D</b>		
(39-54) <b>E</b>		
(21-38) <b>F</b>		
(1-20) <b>G</b>		
Not energy efficient - higher running costs		
England & Wales	EU Directive 2002/91/EC	

Environmental Impact (CO <sub>2</sub> ) Rating		
	Current	Potential
Very environmentally friendly - lower CO <sub>2</sub> emissions		
(92 plus) <b>A</b>		
(81-91) <b>B</b>		
(69-80) <b>C</b>		
(55-68) <b>D</b>		
(39-54) <b>E</b>		
(21-38) <b>F</b>		
(1-20) <b>G</b>		
Not environmentally friendly - higher CO <sub>2</sub> emissions		
England & Wales	EU Directive 2002/91/EC	